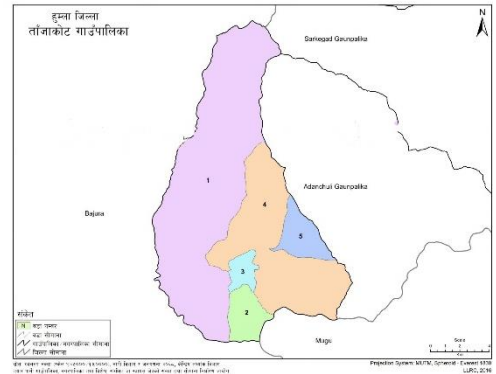


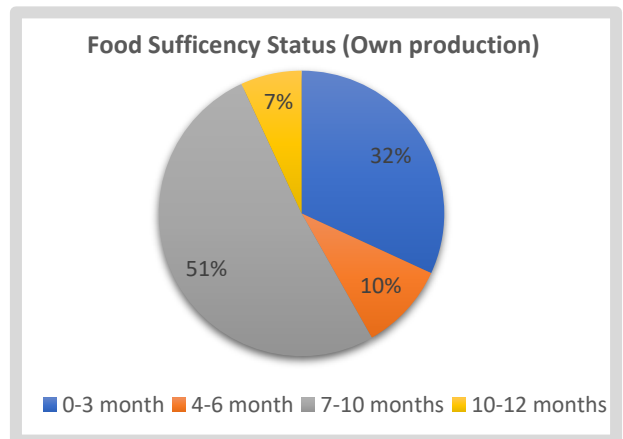
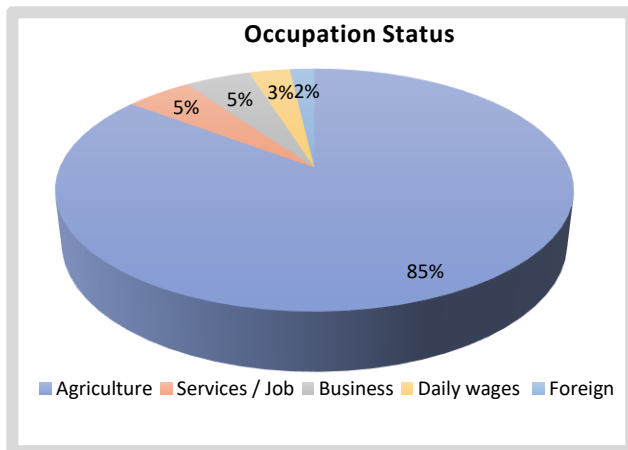
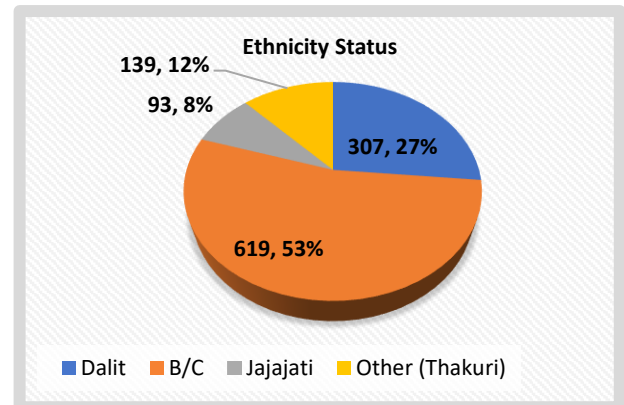
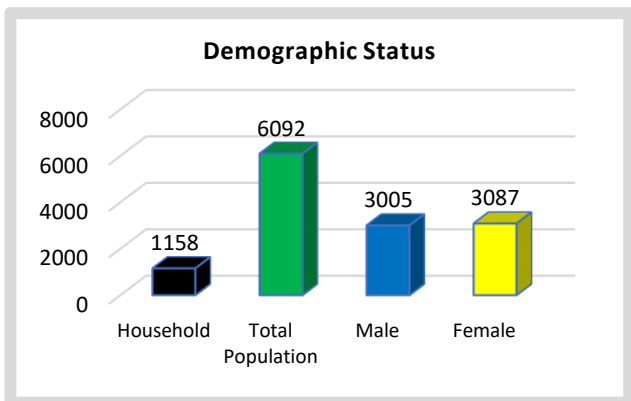
Brief of Tanjakot RM, Humla

Background of Tanjakot RM

Tanjakot Rural Municipality is located in the southwest of Humla district. This RM lies on the border of Mugu divided by the Karnali River and Bajura divided by the Kuwadi River. Tanjakot RM is 147.6 kilometre (48 Kosh) far from the district headquarter Simkot. After the restructured of Nepal in 2073 B.S. the Maila and Madana VDCs have been merged as Tanjakot RM where divided into 5 wards. The area of LG is 159.10 square kilometres. A total of 1158 households and 6092 population has been lived in LG where 3087 female and 3005 male population. The average family size is 5.26. There are inhabited by various castes and ethnicity such as Brahmin, Kshetri, Dalit, and Janajatis. Hindu is the majority religion and the mother tongue is Khas Nepali. Most of the people are dependent on agriculture. Various types of domestic animal husbandry are also sources of income for the community. Lack of sufficient agricultural land and technology, people are facing various problems related to food production and food security and hardly reached food 3 to 4 months from their own products in a year. The sources of the fulfilment of food in the remaining months are labour work and daily wages. As a record, LG human development index is 0.376 (2014) and the average literacy rate is 48.78 (CBS 2021). The Masto Puja/Debata is the greatest god in this area. This LG is also rich socially, culturally and historically.



Key Information of the Rural Municipality

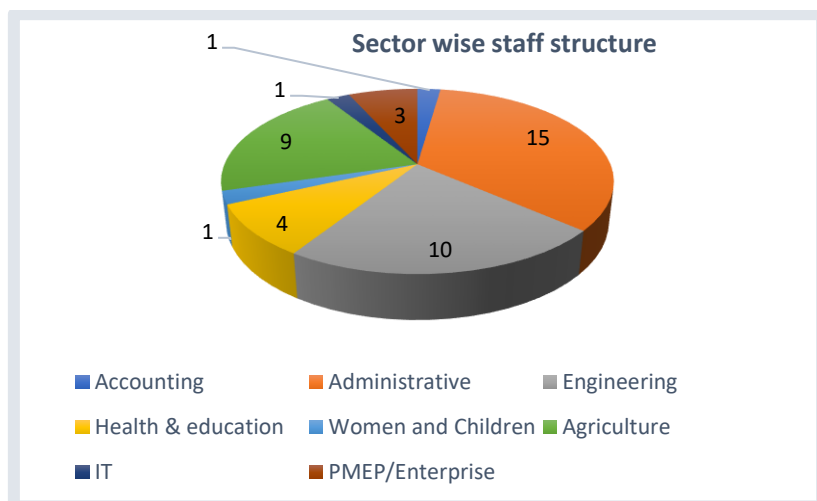


Source: National Population and Housing Census, 2021

Human resources of LG

Key Person / Local Representative

S.N.	Name of representative	Sex	Designation	Contact number	Email id
1	Lalkesh Jaishi	M	Chairperson	9857821930	jaisilalkesh9@gmail.com
2	Surendra Thapa	M	Vice Chair	9848088260	surendrathapa2042@gmail.com
3	Rajendra Syanku	M	CAO	9858320217	rajendrashyanku2048@gmail.com



LG Budget and Expenditure Status:

Heading of Budget	FY 2078/2079		FY 2079/2080		FY 2080/2081	
	Received	Expenditure	Received	Expenditure	Budget received	Expenditure till dated
Equalization grant	70000000	70000000	78842000	71840474.46	69200000	31918745
Condition grant	135555000	130159911	292477659	262189463.58	161882000	58134030
Other grants	00	00	00	00	59692339	21379921
Total	205555000	200159911	371319659	334029938.04	290774339	111432696

Status of LISP's work planning/budgeting works

All the LISP LGs have made different key policy, guidelines, directives, and working procedures i.e. Local Infrastructures Development and Operation, O & M Fund Management, M&E Checklist, ESR etc. and endorsed it's. Which are supported to the LGs for the GRID, climate resilient, and productive local infrastructure planning, budgeting and implementation and creation of labour-intensive employment. LG's have established LG-level local infrastructure repair and maintenance fund for the first time for sustainability of LI.

Development Partners and Programme at LG Level

WFP- Food Security and Nutrition
 ASDP- Agriculture
 PHASE- Health, Nutrition and Agriculture
 KADURI- Electricity
 Himalayan permaculture- Agriculture

Resource Gap

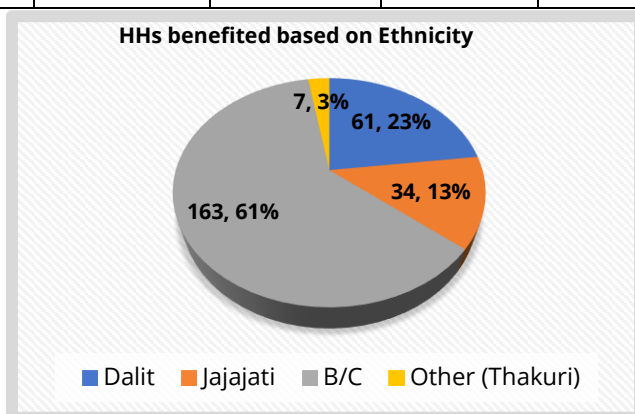
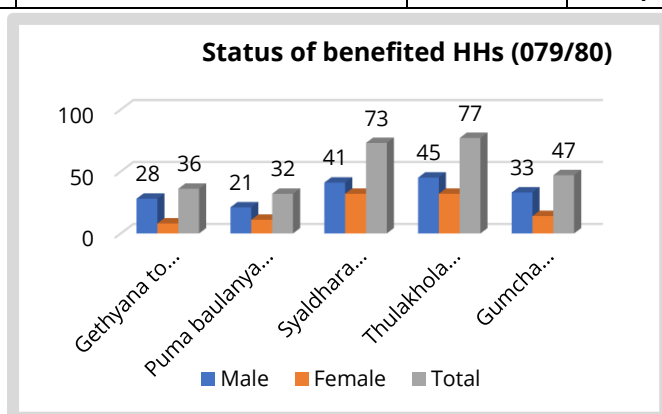
S.N.	Total Liabilities of the LG from the previous FY (NPR)	Total liabilities cleared to in this FY (NPR)	Total liabilities planned to clear in this FY (NPR)	Remaining Liabilities (NPR)	Remarks
1	9,000,000.00	9,000,000.00	00	00.00	No liabilities

Selected Schemes and Allocated Budget

The transition/initial implementation supported LGs to continue to practice evidence and scoring-based prioritization tools to deliver local infrastructures which are demanded by communities, labor intensive, improving disaster and climate resilience and productive. LISP transition continued to facilitate the LG to adopt the scoring-based projects prioritization tool for annual planning and budgeting with a deliberative and inclusive decision-making process. LG has prioritized three schemes comparatively large to co-finance with LISP transition/initial implementation and these schemes are included in the annual programme and budget of LG. Tajnakot Rural Municipality had co-financed NPR. 8.4 million to implement five local infrastructure schemes under LISP Pilot for 2079/2080 whereas NPR. 28.2 million has been allocated co-financing in FY 2080/2081 for the implementation of eight local infrastructure schemes. The details of schemes are given below:

Local Infrastructures Schemes implemented in FY 2079/2080 (Co-financed with the LISP Pilot)

S. N	Name of Schemes and Address	Benefited HHs	Estimated Budget (LG+LISP)	Actual Expenditure			Remarks
				Total	LISP	LG	
1	Gethyana to Sisya Irrigation Canal System	36	4000120.73	3937631.51	2500120.73	1437510.78	Completed
2	Puma baulanya Phalpool gherabr & Irrigation Pond System	32	2535617.70	2498269.19	1285617.70	1212651.49	Completed
3	Syaldhara Bhattee Sayukhet	73	5050149.33	5039145.63	2800149.33	2238996.30	Completed
4	Thulakhola Badelchaur Melpani Sayukheti gherabar & Irrigation Pond System	77	5000231.82	4951003.76	3100231.82	1850771.94	Completed
5	Gumcha Dhadkurilla Community Shyau Kheti Gherabar & Irrigation Pond System	47	3000383.93	2967535.44	1500383.93	1467151.51	Completed
Total		265	19586503.51	19393585.53	11186503.51	8207082.02	



Local Infrastructures Schemes co-financed with LISP Transition/ Initial implementation for FY 2080/2081

S. N.	Name of Schemes and Address	Benefited HHs	Estimated Budget (LG+LISP)	Implementation Status of Schemes
1	Ward Number One Drinking Water Supply Project, Tanjakot 1	90	13200000	UC formed, Pre-construction training completed, plan to kick-off
2	Siyala Timur, Lemon and Walnut Fram compounding project, Tanjakot-2	173	10500000	65% work completed
3	Jairam Khopa Paima Fruit Farm Compounding Project, Tanjakot-3	177	9800000	60% work completed
4	Palika Center Naya Basti DWS Project, Tanjakot-3	50	5700000	completed beneficiaries selection, D/E ongoing
5	Paima Irrigation Canal, Tanjakot-4	80	11676000	40% work completed
6	Tuldhara Koirala Fruit Farm and Irrigation Project, Tanjakot-4	86	6200000	65% work completed
7	Chihi Agriculture and Fruit Farming Compounding Project, Tanjakot-5	80	6700000	65% work completed
8	Gumcha Dhadkurilla Community Apple Farm Compounding Project, Tanajkot-5	102	6400000	65% work completed
	Total	838	70176000	

For the sustainable operation of the schemes, the LG has established operation and maintenance fund allocating 3.5 million Nepalese rupees for 2079/080 and 4 million for 2080/081. LG has endorsed Operation and Maintenance Fund Management Working Procedures/Guideline, 2079 for the effective mobilization of the fund. The Scheme-level operation and maintenance plans will also be prepared in consultation with the beneficiaries.

Challenges	Opportunities For LG:
<ul style="list-style-type: none"> • There is lack of manpower and needed to enhance capacity for available manpower of LG is so challenging • Poor network and internet connectivity • Lack of sufficient budget received from federal and provincial government which could not fulfill to do the development work i.e. local infrastructure, enterprises, social services etc. • Lack of necessary infrastructure for increasing the access of community marginalized people. • Lack of social awareness • Lack of budget required for construction and operation of climate-resilient, employment creation, social inclusion projects 	<ul style="list-style-type: none"> • Optimum mobilization of available manpower for development and administrative work which is possible for LG. • Geographical ease and small geographical structure compared to other municipalities which will do everything quickly. • Available of raw materials and human resources for change and development. • Possible to optimum utilization of received budget for sustainable income, livelihoods, and employment.

Note: For details of Local Infrastructure Support Programme in Raskot pls refer to the following link:

<https://tajakotmun.gov.np/>

'End'